

## Q and A with P. M. H. Atwater, L.H.D., Ph.D. (Hon.)

### An in-depth look at the near-death phenomenon

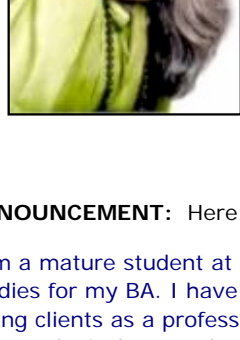
February 2005



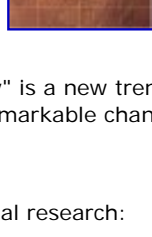
P. M. H. Atwater, L.H.D., Ph.D. (Hon.), is one of the original researchers in the field of near-death studies, having begun her work in 1978. She is one of the very few top NDE researchers who have actually had a NDE. [Her website](#) is filled with very interesting NDE research information and articles of hers. Her contribution to near-death studies is considered to be one of the most important as her first two books, [Beyond the Light](#) and [Coming](#)

[Back to Life](#), are deemed the Bibles of the near-death experience by researchers and a multitude of experiencers and enthusiasts. Using her firm understanding of police investigative techniques as a protocol, she has specialized in original fieldwork and research that also included sessions with significant others. Her findings are contained in six books (see right). Some of her findings have now been clinically verified. Her research is referenced in the distinguished Lancet medical journal, December 15, 2001 ([the landmark Dutch study by Pim van Lommel, M.D.](#)).

For more information about Dr. Atwater's contribution to near-death studies, [download her press kit here](#) in PDF format. You will need the Adobe PDF Reader installed on your computer to read the file. If you don't have the Reader, download it by pressing the Adobe Reader icon provided on the right.



**ANNOUNCEMENT:** The book, [Character Strengths and Virtues: A Handbook and Classification](#), published by Oxford University Press and the American Psychological Association, 2004, recommends significant changes in how clients are to be treated. The book is the "DSM-1" of positive psychology in that it focuses on the good life instead of disorders. "Positive Psychology" is a new trend in counseling, one that has resulted in remarkable changes in people - for the better!



**ANNOUNCEMENT:** Here is a request for NDE participants in astrological research:

I am a mature student at Kepler College in Seattle, Washington, studying Astrological Studies for my BA. I have had a certificate in Astrology since 1990, but am not presently taking clients as a professional astrologer due to my work-load as a student. As part of my astrological research, I am looking for those who have had genuine NDE's and who are agreeable to giving me their birth data (Time, Date, Place), so that I can study the charts. I am looking for common signifiers in the charts. I plan on researching this material and collating the information from which I expect to write an expository paper. In order to give anonymity, I shall not use the names of anyone who is involved, unless they expressly state that they do not mind.

Research should take me about a year depending on participant response.

Anyone interested, please e-mail me at [cmatthews@bwr.eastlink.ca](mailto:cmatthews@bwr.eastlink.ca).

I have studied 'life after life' subjects for about 20 + years, and researched belief systems in some of the main world religions. I believe that NDEs are a special category and deserve more recognition and understanding. Hoping to hear from you. Best regards, Carolyn Matthews.



**QUESTION:** Have you come across any near-death experiencers who were blind or deaf? -- Jeffrey

**PMH Atwater's reply:** I encountered some adult near-death experiencers who were blind, most of them since birth, in my research, but no children who were. Of the adult experiencers, all of them claimed to see and clearly during their near-death episode.

What amazed me is that those who were blind since birth - never saw - recognized colors instantly and knew what color was which just by the site of it, and used the right words to describe what they saw - even if it was to describe people who entered their hospital room, people they had never before touched, heard, or were around. This was very evidential to me. But what amazed me most is that they knew and recognized everything - shapes, sizes, objects, patterns, all of it, all of life. They recognized this from what they said was "before time," before the time of their birth.

I didn't meet that many, maybe seven or so, but enough to make an impression on me which I briefly shared with Kenneth Ring, to back up what he was finding. If you haven't read either of Ken's books about this, his work with the blind, then I highly recommend that you do. The books you want are as follows: [Lessons from the Light: What We Can Learn from the Near-Death Experience](#) (with Evelyn Elsaesser and published by Insight Books, New York City, 1998; and [Mindsight: Near-Death and Out-of-Body Experiences in the Blind](#) (with Sharon Cooper and published by [Institute of Transpersonal Psychology](#), Palo Alto, CA 1999).



Unfortunately, I never had a session with an experiencer who was deaf, so I cannot comment on that particular segment of our population. Nor can I give you a reference.  
-- PMH

**ANOTHER QUESTION:** I have read many accounts of people who have pre-birth memories, as well as those who have had NDEs, who say that we not only choose our parents, the time we live in, etc., but we choose our time and way of death. I find this hard to believe, for I don't think anyone would actually choose burning to death in fire. Sure, it may help burn off (no pun intended) bad karma, and may help a spirit advance quickly in heaven, but there are a million ways to burn off bad karma and there are a million ways to advance spiritually without having to go through the agony of burning to death. My feeling is that those who do die in a fire are just victims of misfortune, or the wrong choices they or others made. What do you think? -- Fred

**PMH Atwater's reply:** There is some truth to the idea of picking one's parents as a spirit or soul before birth. Child experiencers speak of this and at length. So do some adult experiencers - even in cases where the soul entered a body that either was or would become seriously ill or handicapped.



That we choose certain "dates" with destiny, certain events to happen to us, I also know is true. But there can be screw-ups, mistakes, errors, and all kinds of changes that can and do hurry things along or cause delays or swing one off onto a detour that was not planned. Whatever one faces in life (planned at the soul level or not), does not count as much as what we do about it - responses, results, consequences. Therein lies our "fail-safe." No matter what happens we can turn it around. We have that power if we choose to use it. We can get "back on course."

Do we always die when slated to? Yes and no. For some, the exact moment seems to occur at the exact moment. With others, changes are made, dates switched, etc. As an example, I was original "informed" through Guidance that I would die around the time of my 70th birthday in 2007. Now, that may still occur, but I have since come to know that my destiny has changed. I will hang around much longer than that. How much longer? Well, a psychic recently told me I have 15 more years to go. That would make me 82 when I exit. Four other psychics, independently of each other, said the same thing to me within a period of 24 hours. Are they right? We'll both know, won't we ...

I have no doubt that Jesus chose to die on the cross, a most horrible death. I have been involved in many people's deaths that were "right on" as if somehow "planned," down to the last moment. I talk about this in-depth in my book [We Live Forever: The Real Truth About Death](#) (A.R.E. Press, Virginia Beach, VA 2004). But I've also been privy to people's deaths that were a mistake and the soul left screaming.



For the most part, I can say that the soul plans its birth and death, and the major events that will occur in life. Are such plans fool-proof and exact? No way. We have free will, you know. And, with that precious gift of choice, we have the right and the ability to switch the program around, sometimes for the best and sometimes at our detriment.

Be careful of anyone who makes absolute statements in this regard. Research on pre-birth and near-death experiences show that what seems to be true, isn't always. There are variables. Lots of them.

Many blessings,  
P. M. H. Atwater, L.H.D., Ph.D.  
[www.cinemind.com/atwater](http://www.cinemind.com/atwater) or [www](http://www).

[pmhatwater.com](http://pmhatwater.com)

#### Contact P.M.H. Atwater

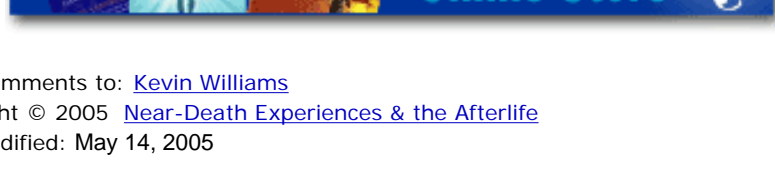
- |                             |                           |                          |                          |                          |
|-----------------------------|---------------------------|--------------------------|--------------------------|--------------------------|
| <a href="#">Email</a>       | <a href="#">Website</a>   | <a href="#">Media</a>    | <a href="#">Schedule</a> | <a href="#">Readings</a> |
| <a href="#">Papers</a>      | <a href="#">Articles</a>  | <a href="#">Fliers</a>   | <a href="#">Ebooks</a>   | <a href="#">Audio</a>    |
| <a href="#">Marketplace</a> | <a href="#">Workshops</a> | <a href="#">Research</a> | <a href="#">Cruise</a>   |                          |

#### Article Archives

- |  |  |
|--|--|
| <a href="#">NDEs &amp; Proof</a>                       | <a href="#">Deathless NDEs</a>                           |
| <a href="#">When Children Die</a>                      | <a href="#">The Difference between Soul &amp; Spirit</a> |
| <a href="#">Evil People &amp; the Afterlife</a>        | <a href="#">NDEs &amp; Divination</a>                    |
| <a href="#">Spirituality &amp; Enlightenment</a>       | <a href="#">Attacks from the Dark Side</a>               |
| <a href="#">Accidents versus Predestination</a>        | <a href="#">Guidance from your Higher Self</a>           |
| <a href="#">The Interface between Soul and Brain</a>   | <a href="#">An After-Death Communication</a>             |
| <a href="#">Funeral Home Awakenings</a>                | <a href="#">NDEs as Transformative Experiences</a>       |
| <a href="#">Evolution &amp; the NDE</a>                | <a href="#">Alzheimers &amp; Death</a>                   |
| <a href="#">The Difference between OBEs &amp; NDEs</a> | <a href="#">An After-Death Communication</a>             |
| <a href="#">When does the Soul Leave the Body?</a>     | <a href="#">Are there NDEs by the Blind?</a>             |
| <a href="#">Is Death Predetermined?</a>                | <a href="#">NDE Peacefulness</a>                         |
| <a href="#">Strange NDE after-effects</a>              |  |

"We cannot keep the life we have on the earth realm, not our possessions or attachments or relationships. What we can keep is our memories and our feelings of what we have integrated into our heart of hearts from the experience of being here, plus the love we have shared with others." - Dr. P.M.H. Atwater.

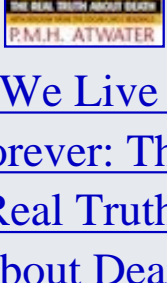
[| Return to newsletter |](#)



Send comments to: [Kevin Williams](#)  
Copyright © 2005 [Near-Death Experiences & the Afterlife](#)  
Last modified: May 14, 2005



#### Books by PMH Atwater



#### [We Live Forever: The Real Truth About Death](#)

by P.M.H. Atwater

Based on Atwater's 25 years of research, personal stories, and her own NDE in 1977



#### [The New Children and Near-Death Experiences](#)

by P.M.H. Atwater

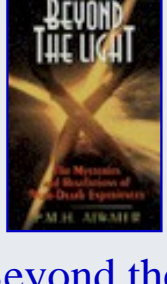
An expansion of Atwater's original book "Children of the New Millennium" taking it to another level.



#### [The Complete Idiot's Guide to Near-Death Experiences](#)

by P.M.H. Atwater

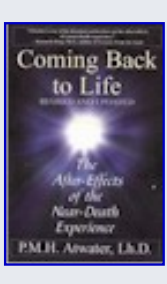
This is the "encyclopedia" of the NDE and the most complete book done in the field of NDE studies.



#### [Beyond the Light](#)

by P.M.H. Atwater

An in-depth study of the NDEs of over 3,000 adult experiencers.



#### [Coming Back to Life](#)

by P.M.H. Atwater

Looks at all aspects of the NDE and its aftereffects including possible changes in the brain.



#### [Future Memory](#)

by P.M.H. Atwater

Deals with the transformation of consciousness and what that might portend to future memory.



#### [Children of the New Millennium](#)

by P.M.H. Atwater

An in-depth study of child NDEs and a how these children compare to the new children being born today.

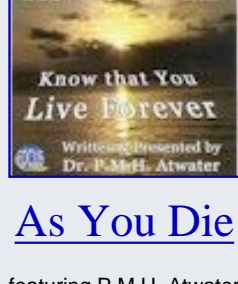
#### Videos by PMH Atwater



#### [Beyond the Light](#)

featuring P.M.H. Atwater

Dr. Atwater shares her testimony of three life-changing NDEs with host Mary Lou McCall.

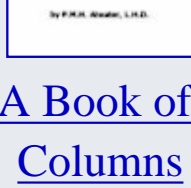


#### [As You Die](#)

featuring P.M.H. Atwater

Available in CD-ROM, DVD, and VHS formats! Atwater leads people through the wonderful journey which begins as one lays hovering between life and death, then leads them away from any fear and despair towards a peace and unconquered hope, knowing that as we die ... we live forever!

#### Ebook by PMH Atwater



#### [A Book of Columns](#)

by P.M.H. Atwater

This ebook contains all of Dr. Atwater's columns from the IANDS newsletter "Vital Signs" from June of 1981 until 2004. Proceeds go to support IANDS and its mission.